



[www.korev.ae](http://www.korev.ae)



# TABLE OF CONTENT

## INTRODUCTION.....03

- Founder Messages.....03
- About the Company.....04
- Vision Statement.....05
- Mission Statement
- Core Values

## OUR EXPERIENCE.....06

- Approach to Project Life Cycle.....06
- Construction Phase Overview
- Post-Construction and Turnover
- Areas of Expertise.....07

## SERVICES WE OFFER.....07

- Comprehensive Building Contracting.....07
- Duct and Utility Service Drilling
- Metal Structures Design & Fabrication
- Heavy Materials Transport & Assembly
- Perimeter Fencing & Barbed Wire Installation.....08
- Architectural & Structural Building Design
- Roads and Infrastructure Contracting
- Specialized Metal Construction Contracting

**OUR COMMITMENT TO QUALITY & HSE.....09**

- Quality Assurance and Control.....09
- Standards and Certifications
- Continuous Improvement Initiatives
- HSE
- Our Policies

**OUR TEAM.....10**

- Leadership and Management Structure...10
- Organization Chart.....11
- Key Personnel.....12
- Employee Development & Training Programs

**OUR COMPANIES.....13**

**OUR PROJECTS.....14**

- Completed projects list.....14

**OPERATIONAL ASSETS & LOGISTICS.....19**

- Machinery and Equipment Portfolio
- Machinery and Equipment List.....20
- Logistical Mobility and Support Capabilities

**CLIENTS & PARTNERS.....21**

**CERTIFICATES AND ACCREDITATIONS.....22**





## FOUNDER'S MESSAGE

Over the years, we have built a reputation grounded in hands-on experience, professionalism, and unwavering commitment to quality. What started as a vision has evolved into one of the most dependable construction partners in the UAE.

Today, as the UAE continues to invest in modern infrastructure and ambitious urban development, the demand for sustainable, efficient, and expertly managed construction projects is higher than ever. Korev is proud to play an active role in this national transformation contributing to vital infrastructure, road networks, and building projects that align with the country's vision for growth and innovation.

Our success is driven by the dedication of our people, the trust of our clients, and our unwavering pursuit of excellence. We remain focused on leading with integrity, embracing technology, and delivering value that endures beyond the build.

Warm regards,

**Abdulla MUSAAD SAIED AL MANSOORI**

Founding Chairman

**KOREV CONSTRUCTION & GENERAL CONTRACTING.**

## ABOUT THE COMPANY

Founded in 2011, Korev Construction & General Contracting L.L.C. is a UAE-based company with extensive experience in executing complex construction and infrastructure projects. Over the years, it has evolved into a multidisciplinary contractor with a solid track record across residential, commercial, industrial, and governmental sectors.

The company offers a comprehensive range of services, including building contracting, roadworks, HVAC system installation, metal structure fabrication, utility duct drilling, and perimeter security solutions. These offerings are backed by skilled workforce, advanced machinery, and strong project governance.

With a project life cycle approach that ensures seamless execution from planning to post-construction, Korev maintains the highest standards of quality, safety, and environmental responsibility. Its commitment to excellence is further supported by internationally recognized certifications, a well-structured organization, and a portfolio of completed works that reflect both technical capability and client satisfaction.

Driven by a clear vision and strong core values, the company continues to contribute to the UAE's strategic development goals through innovation, operational reliability, and long-term partnerships.

## VISION STATEMENT

To be recognized as a leading construction and contracting company in the UAE, delivering innovative, sustainable, and high-quality solutions that contribute to national development and community growth.

## MISSION STATEMENT

To deliver superior construction and infrastructure services by fostering a culture of excellence, safety, and continuous improvement. We aim to build long-term relationships with our clients by consistently exceeding expectations through professionalism, innovation, and integrity.

## CORE VALUES

### Integrity

We operate with honesty and transparency in all business dealings.

### Excellence

We strive for the highest standards in every aspect of our work.

### Customer Commitment

Our clients' success is our priority.

### Safety

We uphold rigorous health and safety protocols across all projects.

### Innovation

We embrace modern technologies and methods to enhance efficiency.

### Teamwork

Collaboration and mutual respect drive our company culture.



## OUR EXPERIENCE

### Approach to Project Life Cycle

Korev employs a structured and strategic approach to the project life cycle. From initial planning to project handover, each stage is managed with clear objectives, timelines, and quality benchmarks. Our project managers work closely with clients to ensure seamless coordination, resource optimization, and adherence to scope and specifications.

### Construction Phase Overview

During the construction phase, Korev deploys experienced teams, quality materials, and efficient equipment to execute projects with precision. We maintain a transparent workflow, ensure regulatory compliance, and monitor every activity to minimize risk and deliver on time.

### Post-Construction and Turnover

Our commitment continues beyond project completion. We ensure all final inspections, quality assessments, and documentation are in place to hand over projects in a ready-to-operate state. Our post-construction support ensures client satisfaction and long-term functionality.

# AREAS OF EXPERTISE

Residential & Commercial Buildings

Hvac and MEP Systems

Utility Duct Drilling & Fencing Solutions

Roads and Infrastructure

Industrial & Decorative Metal Structures

# SERVICES WE OFFER

## 01 Comprehensive Building Contracting

Execution of all types of building projects including residential complexes, office buildings, warehouses, and commercial developments.

## 02 Duct and Utility Service Drilling

Precision drilling for utility connections and duct systems with minimal disruption and full compliance with safety regulations.

## 03 Metal Structures Design & Fabrication

Design, fabrication, and erection of structural and architectural metalworks for various commercial and industrial applications.

## 04 Heavy Materials Transport & Assembly

Logistics and transport solutions for heavy materials, including on-site lifting and assembly using specialized equipment and vehicles.





## **05** Perimeter Fencing & Barbed Wire Installation

---

Installation of durable and secure perimeter fencing systems, including chain-link and barbed wire solutions for government, industrial, and private projects.

## **06** Architectural & Structural Building Design

---

Design services for new constructions including architectural planning, structural analysis, and detailed execution drawings.

## **07** Roads and Infrastructure Contracting

---

Construction and maintenance of roads, streets, drainage systems, and related infrastructure components to support urban development.

## **08** Specialized Metal Construction Contracting

---

Execution of high-tolerance and complex metal constructions for specialized projects including towers, sheds, and industrial plants.

# OUR COMMITMENT TO QUALITY & HSE

## Quality Assurance and Control

Quality is a core pillar of our operations. We implement rigorous quality assurance and control measures at every stage of the project, from planning and procurement to execution and handover. Our internal QA/QC teams conduct systematic inspections, monitor compliance with project specifications, and ensure all deliverables meet or exceed client expectations.

## Standards and Certifications

We adhere to internationally recognized standards, including ISO certifications, to maintain excellence in service delivery. Our compliance with local and global regulatory frameworks underscores our commitment to transparency, accountability, and technical reliability.

## Continuous Improvement Initiatives

We embrace a culture of continuous improvement through regular staff training, process evaluation, and performance benchmarking. Feedback from clients and internal stakeholders is actively used to refine our systems and enhance our capabilities.

## Health, Safety, and Environment (HSE)

Maintaining a safe working environment is fundamental to our success. Our HSE management system is designed to prevent accidents, promote health and well-being, and ensure environmental sustainability on all project sites. We conduct regular safety audits, enforce strict PPE requirements, and foster a proactive safety culture across all levels of the organization.

## Our Policies

Our operations are guided by a set of well-defined policies covering ethics, quality, HSE, and sustainability. These policies ensure consistency in decision-making and align our actions with the expectations of clients, regulatory bodies, and society at large.



# OUR TEAM

## Leadership and Management Structure

Korev's leadership team is composed of highly experienced professionals who bring a blend of technical knowledge, industry foresight, and operational discipline. With backgrounds in civil engineering, construction management, financial strategy, and regulatory compliance, our executive team ensures that every project aligns with client expectations and national development goals.

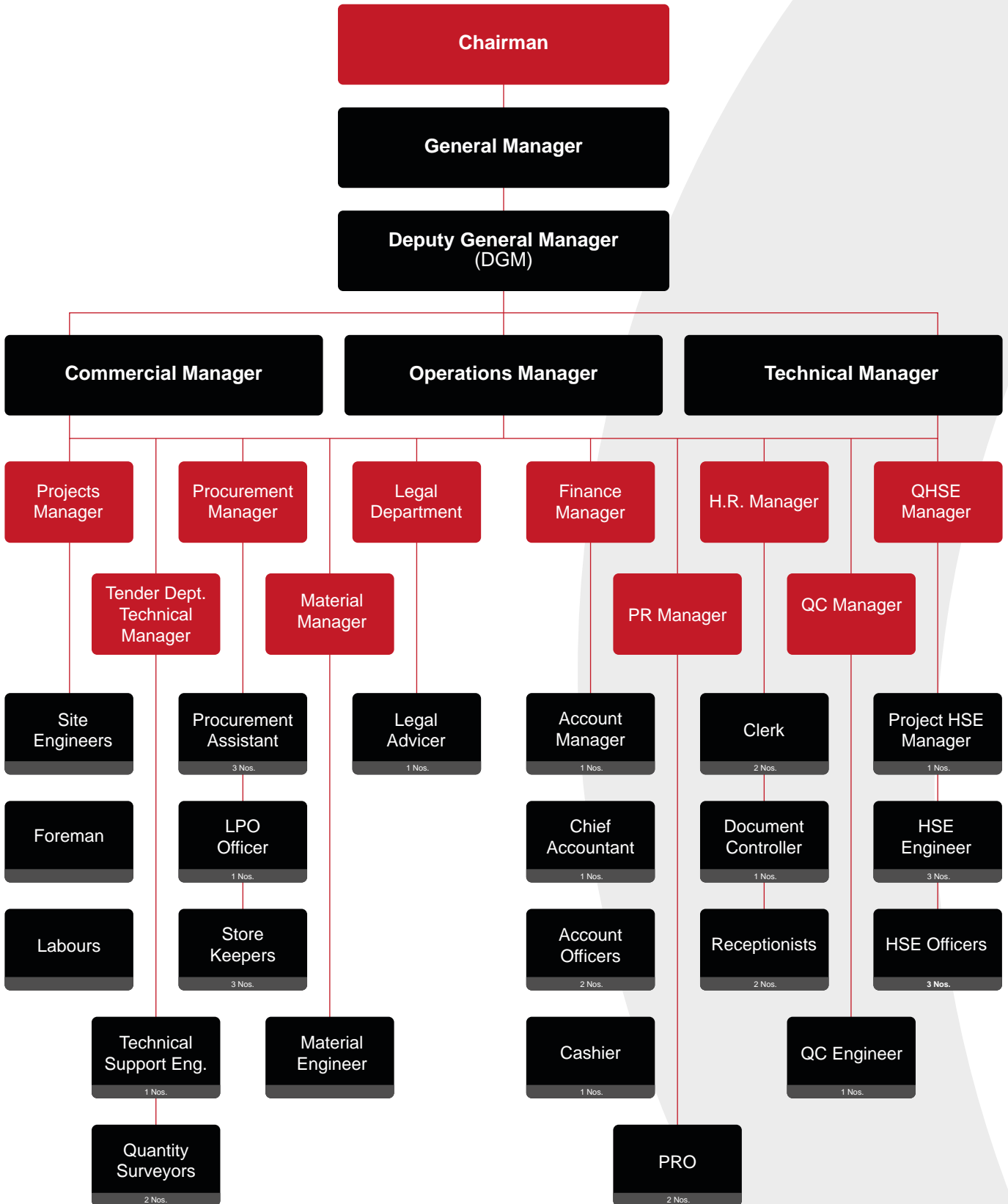
The senior management is directly involved in strategic planning, project oversight, and risk management. Their proactive leadership fosters a performance-driven culture where quality, safety, and efficiency are deeply embedded in daily operations.

Supported by department heads across engineering, HSE, quality control, procurement, and finance, the leadership ensures seamless coordination and alignment with international standards. Their commitment to transparency and continuous improvement drives Korev's long-term vision while ensuring timely and successful project delivery.



# ORGANIZATION CHART

Korev's organizational framework is structured to promote efficiency, accountability, and fast decision-making. Departments such as Project Management, Engineering, Procurement, HSE, and Quality Control work in close coordination to ensure smooth project execution.



# KEY PERSONNEL

Our team includes a wide spectrum of skilled professionals, carefully selected for their qualifications and experience. The company currently employs:

**02**

Asphalt  
Group

**60**

Site  
Supervisors

**250**

Operators/  
Drivers

**650**

Skilled  
Labours

**900**

Un Skilled  
Labours

This technical capacity enables Korev to undertake large-scale and complex projects with precision and confidence.

## EMPLOYEE DEVELOPMENT AND TRAINING PROGRAMS

We believe that continuous professional development is key to organizational excellence. Employees regularly participate in technical training, safety certifications, and leadership workshops to enhance their capabilities and align with evolving industry standards.





## OUR COMPANIES

Korev Construction & General Contracting L.L.C. operates as part of a broader group of entities that contribute to a shared mission of delivering excellence across construction, infrastructure, and property development.

The company benefits from strategic partnerships and group affiliations that provide access to complementary expertise, resources, and support services. These relationships enhance operational capabilities and offer a more integrated approach to project delivery, especially in complex and multidisciplinary environments.

Our group companies share the same commitment to quality, safety, and innovation, helping us to serve both public and private sector clients more effectively and sustainably.

AL LUL اللؤلؤ

 **Al Sultan**  
READY MIX & PRE CAST CONCRETE





## OUR PROJECTS

Korev has an extensive portfolio of completed and ongoing projects across the United Arab Emirates. Each project reflects our commitment to quality, timely delivery, and alignment with national development objectives.

## COMPLETED PROJECTS LIST

Our completed projects include road construction, infrastructure rehabilitation, perimeter fencing, gate installations, and building developments across key regions such as Abu Dhabi, Al Ain, and the Western Region. Notable examples include:

- Border Fence Development (CICPA – 53KM)
- Electronic Gates in Al Dhafra Region
- Asphaltic Road Projects in Abu Dhabi Mainland
- Security Infrastructure for Government and Military Facilities
- Rehabilitation Works in Dalma City and Liwa

*A full list of completed and ongoing projects is available in the appendix of this profile.*



**Sports Hall for UAE Jiu-Jitsu Federation**  
Location : Abu Dhabi





**FOOD TRUCK PARK**  
Location : MBZ City (Z4) Abu Dhabi



**Sports Hall for UAE Jiu-Jitsu Federation**  
Location : Abu Dhabi



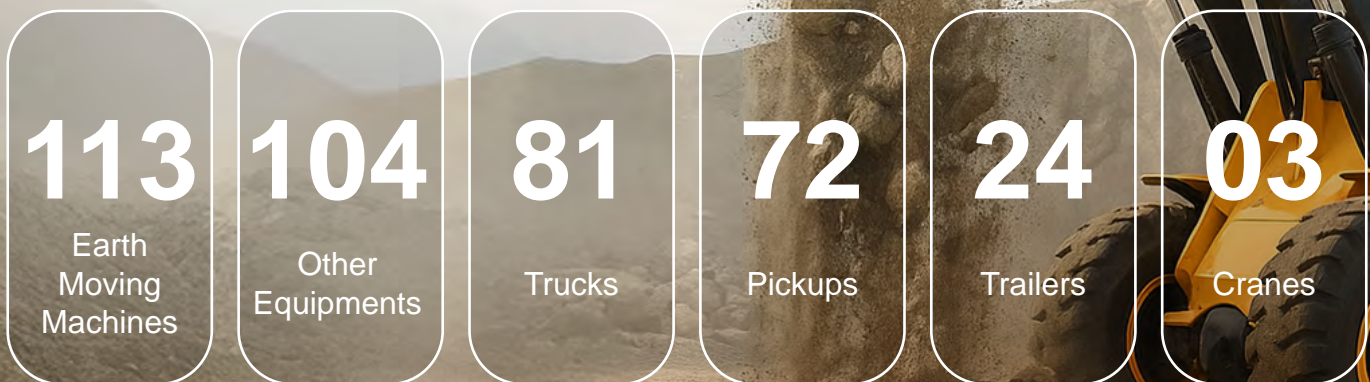


**CICPA Boundary Wall, UAE & Oman Border**  
Location : Al Ain

# OPERATIONAL ASSETS & LOGISTICS

## Machinery and Equipment Portfolio

Korev maintains a comprehensive fleet of construction machinery and support vehicles to meet a variety of project demands. Our current portfolio includes:



All machinery is subject to regular maintenance and inspection schedules, ensuring reliability, efficiency, and safety.

## Machinery and Equipment List

Description	Quantity	Description	Quantity
Double Cabin	51	Pneumatic Tyred Roller	9
Plate Compactor	40	JCB Baby Roller	8
Water Tanker	38	Truck Mounted Attenuators	8
Dump Truck	23	Truck Mounted Crane	7
3 Ton Pick Up	21	Excavator	7
Lighting Towers	20	Recovery Vehicle - Big/Small	6
JCB	19	HD Vibratory Tandem Roller	6
Bus/Mini Bus	18	Bomag Vibratory Roller	5
Baby Roller	15	Mobile Work Shop	4
Dozer & Grader (Each 6)	12	Mobile Crane	3
Bobcat JCB Skid Loader	12	Paver Machine	3
Trailer (Big 35)	12	Low Bed Trailer	2
Shovel	11	Bitumin Spray Tanker	2
Doosan Air Compressor	10	Diesel Bowser (Tanker)	2
Flat Trailer	10	Cold Milling Machine	2
Mobile Caravan	10	Suction Tanker	1

## Logistical Mobility and Support Capabilities

Our logistical strength is a key enabler of timely project delivery. Korev has dedicated teams and resources for transport coordination, site mobilization, and material handling across the UAE. The company's centralized asset management system ensures that the right equipment and personnel are deployed efficiently, reducing downtime and cost while maximizing productivity.

# CLIENTS & PARTNERS

Korev Construction & General Contracting L.L.C. has built strong relationships with a diverse range of public and private sector clients across the UAE. Our clientele includes government departments, municipalities, defense authorities, oil & gas sector entities, and real estate developers.

Notable clients and partners include:



These partnerships are founded on mutual trust, timely performance, and consistent delivery of quality outcomes. We value long-term collaboration and remain committed to supporting our clients' goals through proactive service and technical excellence.

# CERTIFICATES AND ACCREDITATIONS

Korev Construction & General Contracting L.L.C. operates under a framework of nationally and internationally recognized certifications that affirm our commitment to quality, safety, and compliance.

## Official Registrations & Licenses

- Valid Commercial Trade License - Abu Dhabi Department of Economic Development
- Classification Certificate - Urban Planning and Municipalities
- Chamber of Commerce Registration
- Establishment Cards - MOHRE and ICA

## International Standards Certifications

- ISO 9001 - Quality Management Systems
- ISO 14001 - Environmental Management Systems
- ISO 45001 - Occupational Health and Safety Management Systems

## Value and Compliance Credentials

- In-Country Value (ICV) Certificate - Recognized Service Provider
- VAT Registration Certificate - Federal Tax Authority

## Recognition & Awards

- Letters of Appreciation from various government entities for project delivery and compliance excellence

These certifications reflect our continuous commitment to maintaining excellence, operating ethically, and meeting the evolving standards of the construction and infrastructure industry in the UAE.



T : +971 2 551 5000

F : +971 2 551 1125

E : [info@korev.ae](mailto:info@korev.ae)

A : 8 Al Araji St- MW4,  
Musaffah, Abu Dhabi UAE.